

# COLORING EXERCISE

Using colored pens or pencils, shade in the figure and accompanying labels in contrasting colors of your choice as indicated by the red numerals.

## The Upper Extremity

SCAPULA 1  
CLAVICLE 2  
HUMERUS 3  
RADIUS 4  
ULNA 5  
PISIFORM 6

TRIQUETRUM 7  
LUNATE 8  
SCAPHOID 9  
HAMATE 10  
CAPITATE 11  
TRAPEZOID 12  
TRAPEZIUM 13

METACARPAL 14  
PROXIMAL PHALANX 15  
MIDDLE PHALANX 16  
DISTAL PHALANX 17

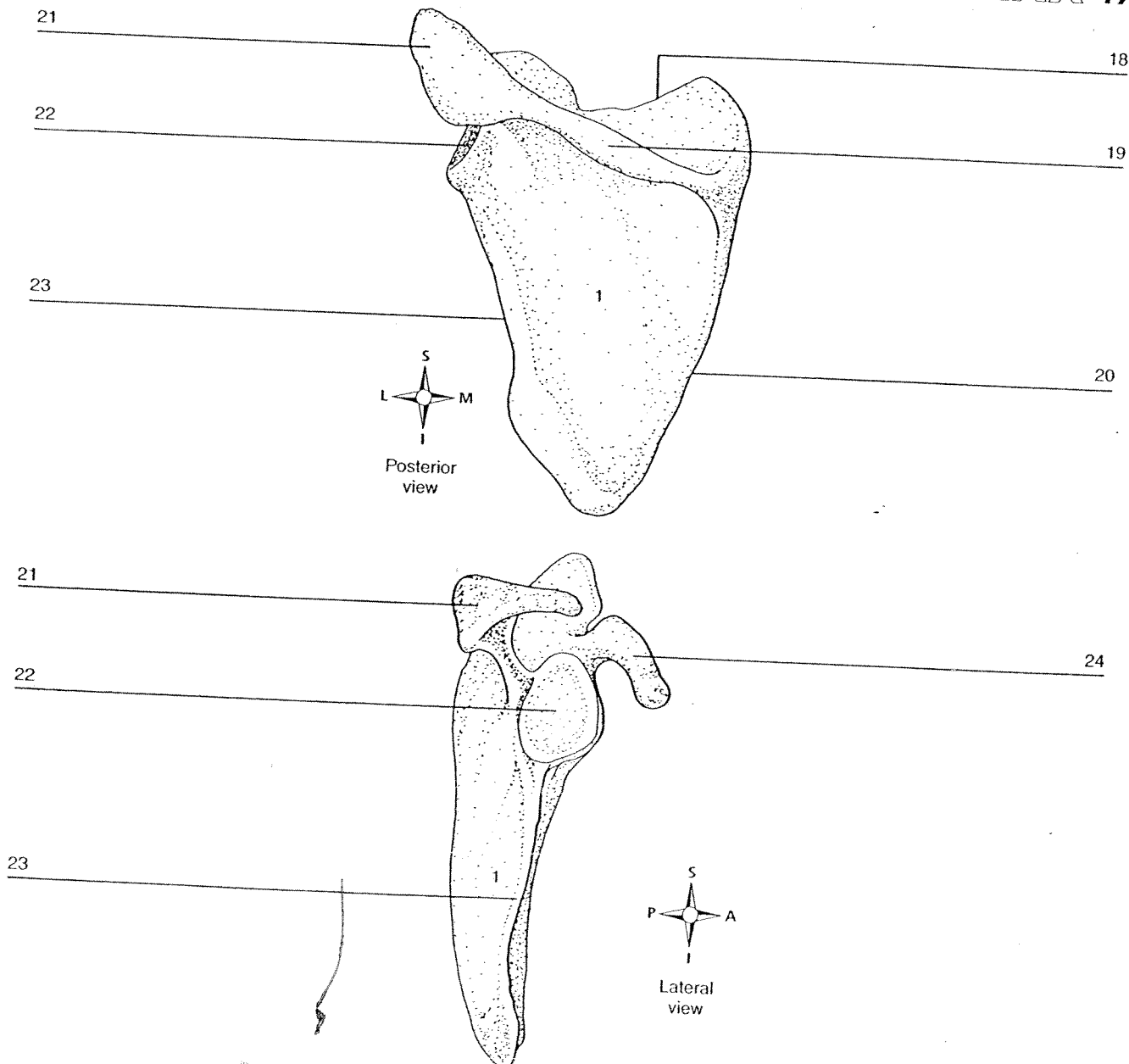


Figure 14-2 Proximal structures of the upper extremity. After coloring the diagram, label the specific structures noted on the lines provided and on the blanks in the Lab Report at the end of this exercise.